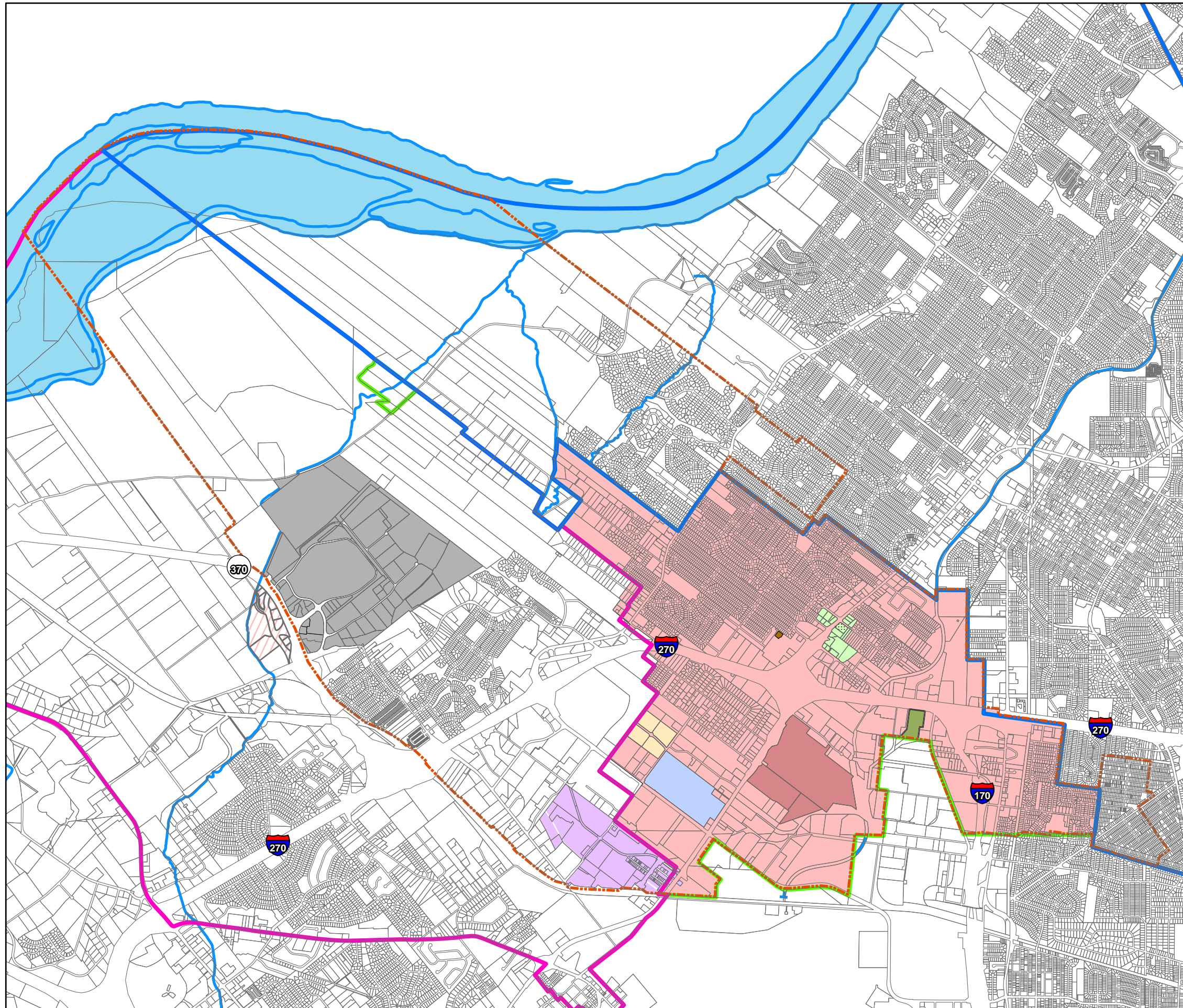


Exhibit F Economic Development Districts

2008 Comprehensive Plan Update
City of Hazelwood



Legend

- City of Hazelwood Mills & Park 370 TDD/CID
 - City of Bridgeton Mills & Park 370 TDD/CID
 - Hazelwood Commerce Center CID/353
 - IBM Chapter 100 District
 - Lambert Pointe NID
 - Walgreens TDD Area
 - Convergys Corporation Chapter 100
 - Elm Grove Economic District TIF
 - Aviator Business Center 353 District
 - BRI Local Option Loan
 - Hazelwood "A" City
 - City of Hazelwood City Limits
- Fire Districts**
- Florissant Valley
 - Hazelwood
 - Robertson

Municipal Boundary Based on St. Louis County Data
City of Hazelwood Parcel Boundary Based on St. Louis County Data

JULY 2008

